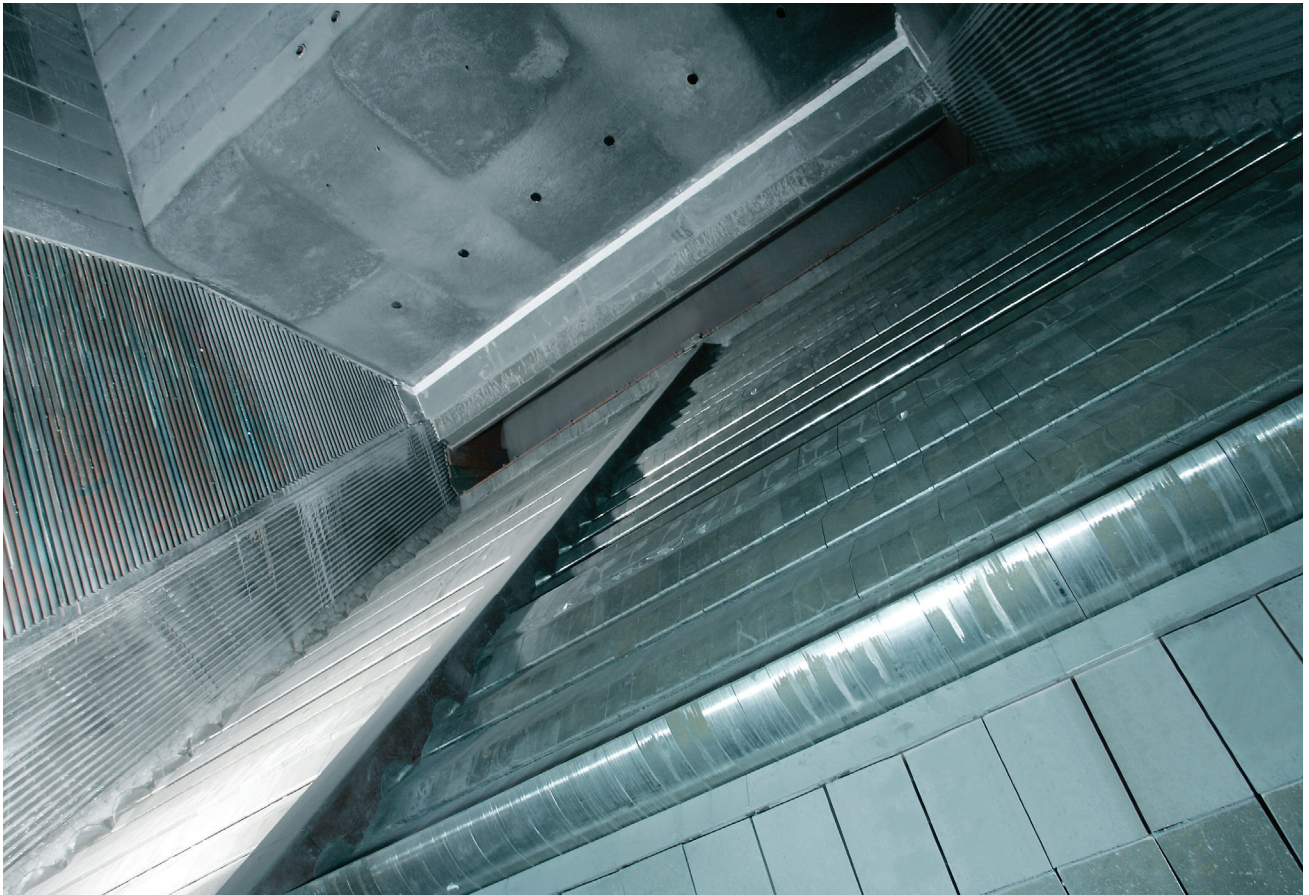


# Spare parts for DynaGrate®



## Table of contents

## Wear parts for DynaGrate®



Grate bars  
Page 4-5



Fixed grate bars  
Page 5



Water-cooled elements  
Page 5



End blocks, lower  
Page 6



Cover plates  
Page 6



T-plates  
Page 6-7



Connection plates  
Page 7



Cover plates for center piece  
Page 7



Sving plates  
Page 7-8



Tension rods  
Page 8



Pins  
Page 8-9



Stretch bolts  
Page 9



Carb bearings  
Page 9



Disc springs  
Page 9



Inlet pipes  
Page 10



Coupling blocks  
Page 10



Insulation plates  
Page 11

## Table of contents

## Strategic parts for DynaGrate®



T-plates, under  
Page 12



End pieces  
Page 12



Middle pieces  
Page 12-13



Shaft cover plates  
Page 13



Frame for cover plates  
Page 13



Radiation shields  
Page 14-16



Support frames  
Page 16



Frame rails  
Page 16





*Bracket elements*  
Page 16-18



*Swing fixtures*  
Page 18



*Sealing bushings*  
Side 18



*Bearing housings*  
Page 18-19



*Bearing supports*  
Page 19



*Drive and synchronous arms*  
Page 19



*Guiding plates*  
Page 20



*Synchronous joints*  
Page 20



*Cylinder brackets*  
Page 20



*Guide pins*  
Page 20-21



*Bolts L=678mm*  
Page 21



*Strips for mantles*  
Page 21



*Barrel bolts*  
Page 21



*Barrel bolt suspensions*  
Page 22



*Barrel bolt, under*  
Page 22



*Lock plates for barrel bolts*  
Page 22



*Lock plates*  
Page 22



*Round steel bars*  
Page 23



*Brackets for barrel bolts*  
Page 23



*Disc covers*  
Page 23



*Small sealing bushings*  
Page 23



*Clamp fittings*  
Page 23



*Spacers*  
Page 24



*T-plates for middle section*  
Page 24-25



*Covers for middle section*  
Page 26-27



*Bearing covers and flanges*  
Page 27

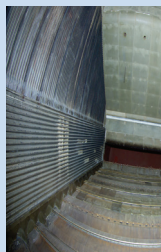


*Sealing flanges*  
Page 27



*Guide bearing housings*  
Page 27

## Wear parts for DynaGrate®



### Wear parts for DynaGrate:

- Typically stocked items
- Typically short delivery time
- Order in due time if it is a large number

### Grate bar, mark 5

<b>Grate type</b>	<b>B&amp;W's original no.</b>	90,10,000010014
<ul style="list-style-type: none"> <li>• Air-cooled DynaGrate</li> <li>• Water-cooled DynaGrate</li> </ul>	<b>B&amp;W's SAP no.</b>	5000004463
	<b>Weight each</b>	17.2 kg
<b>Installation place</b>	<b>Model no.</b>	601.074
<ul style="list-style-type: none"> <li>• On the shafts.</li> </ul>		



### Grate bar with cooling fins

<b>Grate type</b>	<b>B&amp;W's original no.</b>	90,10,000010016
<ul style="list-style-type: none"> <li>• Air-cooled DynaGrate</li> <li>• Water-cooled DynaGrate</li> </ul>	<b>B&amp;W's SAP no.</b>	5000004458
	<b>Weight each</b>	17.2 kg
<b>Installation place</b>	<b>Model no.</b>	602.713
<ul style="list-style-type: none"> <li>• On the shafts.</li> </ul>		



### Last grate bar, mark 5

<b>Grate type</b>	<b>B&amp;W's original no.</b>	90,10,000010214
<ul style="list-style-type: none"> <li>• Air-cooled DynaGrate</li> <li>• Water-cooled DynaGrate</li> </ul>	<b>B&amp;W's SAP no.</b>	5000004476
	<b>Weight each</b>	19.6 kg
<b>Installation place</b>	<b>Model no.</b>	601.022
<ul style="list-style-type: none"> <li>• On the shafts.</li> </ul>		



### First half grate bar, mark 5

<b>Grate type</b>	<b>B&amp;W's original no.</b>	90,10,000011114
<ul style="list-style-type: none"> <li>• Water-cooled DynaGrate</li> </ul>	<b>B&amp;W's SAP no.</b>	5000004456
	<b>Weight each</b>	12.8 kg
<b>Installation place</b>	<b>Model no.</b>	601.075
<ul style="list-style-type: none"> <li>• On the shafts.</li> </ul>		





## Wear parts for DynaGrate®

### First half grate bar with cooling fins

<b>Grate type</b>	<b>B&amp;W's original do.</b>	90,10,000011116
• Air-cooled DynaGrate	<b>B&amp;W's SAP no.</b>	5000004452
• Water-cooled DynaGrate	<b>Weight each</b>	12.8 kg
<b>Installation place</b>	<b>Model no.</b>	602.714
• On the shafts.		



### Last half grate bar, mark 5

<b>Grate type</b>	<b>B&amp;W's original no.</b>	90,10,000011214
• Air-cooled DynaGrate	<b>B&amp;W's SAP no.</b>	5000004472
• Water-cooled DynaGrate	<b>Wight each</b>	11.6 kg
<b>Installation place</b>	<b>Model no.</b>	601.076
• On the shafts.		



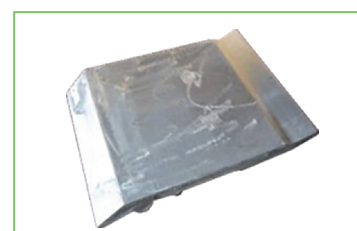
### Fixed grate bar W=200 mm, mark 5

<b>Grate type</b>	<b>B&amp;W's original no.</b>	90,10,000012014
• Air-cooled DynaGrate	<b>B&amp;W's SAP no.</b>	5000004449
• Water-cooled DynaGrate	<b>Weight each</b>	22.0 kg
<b>Installation place</b>	<b>Model no.</b>	601.151
• On the grate bed, in upper bracket element.		



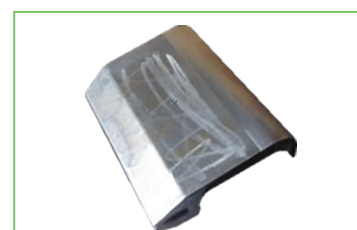
### Grate element, water-cooled

<b>Grate type</b>	<b>B&amp;W's original no.</b>	90,10,000010017
• Water-cooled DynaGrate	<b>B&amp;W's SAP no.</b>	5200018581
<b>Installation place</b>	<b>Weight each</b>	57.4 kg
• On the shafts.	<b>Model no.</b>	690.055



### First half grate bar, water-cooled

<b>Grate type</b>	<b>B&amp;W's original no.</b>	90,10,000011117
• Water-cooled DynaGrate	<b>B&amp;W's SAP no.</b>	5200018582
<b>Installation place</b>	<b>Weight each</b>	41.0 kg
• On the shafts.	<b>Model no.</b>	690.062



## Wear parts for DynaGrate®

### End block, lower, mark 5

<b>Grate type</b>	<b>B&amp;W's original no.</b>	90,10,000015220
	<b>B&amp;W's SAP no.</b>	5000000822
• Air-cooled DynaGrate	<b>Weight each</b>	4.5 kg
• Water-cooled DynaGrate	<b>Model no.</b>	601.095
<b>Installation place</b>		
• In the end section, in the frame for the cover plate.		



### Cover plate

<b>Grate type</b>	<b>B&amp;W's original no.</b>	90,10,00001600
	<b>B&amp;W's SAP no.</b>	3 5000001744
• Air-cooled DynaGrate	<b>Weight each</b>	8.9 kg
• Water-cooled DynaGrate	<b>Model no.</b>	1-529-1B
<b>Installation place</b>		
• In the end section, in the frame for the cover plate.		



### Cover plate for centre bracket

<b>Grate type</b>	<b>B&amp;W's original no.</b>	90,10,000016004
	<b>B&amp;W's SAP no.</b>	5200009908
• Air-cooled DynaGrate	<b>Weight each</b>	8.9 kg
• Water-cooled DynaGrate	<b>Model no.</b>	0039819
<b>Installation place</b>		
• In the end section, in the frame for the cover plate.		



### T-plate, upper left/lower right, mark 5

<b>Grate type</b>	<b>B&amp;W's original no.</b>	90,10,000016112
	<b>B&amp;W's SAP no.</b>	5000006512
• Air-cooled DynaGrate	<b>Weight each</b>	13.8 kg
• Water-cooled DynaGrate	<b>Model no.</b>	601.139
<b>Installation place</b>		
• Interior side of the grate, around the shafts.		



### T-plate, upper right/lower left, mark 5

<b>Grate type</b>	<b>B&amp;W's original no.</b>	90,10,000016122
	<b>B&amp;W's SAP no.</b>	5000006509
• Air-cooled DynaGrate	<b>Weight each</b>	13.8 kg
• Water-cooled DynaGrate	<b>Model no.</b>	601.138
<b>Installation place</b>		
• Interior side of the grate, around the shafts.		



## Wear parts for DynaGrate®

### *T-plate*

<b>Grate type</b>	<b>B&amp;W's original no.</b>	90,10,000016231
	<b>B&amp;W's SAP no.</b>	5000006498
<ul style="list-style-type: none"> <li>• Air-cooled DynaGrate</li> <li>• Water-cooled DynaGrate</li> </ul>	<b>Weight each</b>	17.2 kg
<b>Installation place</b>	<b>Model no.</b>	601.127
		<ul style="list-style-type: none"> <li>• Interior side of the grate, around the shafts.</li> </ul>



### *Connection plate*

<b>Grate type</b>	<b>B&amp;W's original no.</b>	90,10,000016730
	<b>B&amp;W's SAP no.</b>	5000006635
<ul style="list-style-type: none"> <li>• Air-cooled DynaGrate</li> <li>• Water-cooled DynaGrate</li> </ul>	<b>Weight each</b>	9.6 kg
<b>Installation place</b>	<b>Model no.</b>	601.094
		<ul style="list-style-type: none"> <li>• Start section before the first half grate bars. Mounted on swing bracket.</li> </ul>



### *Cover plate for middle piece with hole*

<b>Grate type</b>	<b>B&amp;W's original no.</b>	90,10,000016860
	<b>B&amp;W's SAP no.</b>	5000001753
<ul style="list-style-type: none"> <li>• Air-cooled DynaGrate</li> <li>• Water-cooled DynaGrate</li> </ul>	<b>Weight each</b>	5.4 kg
<b>Installation place</b>	<b>Model no.</b>	601.117
		<ul style="list-style-type: none"> <li>• Above the T-plates on grate 1, in both sides internally.</li> </ul>



### *Cover plate for upper middle piece*

<b>Grate type</b>	<b>B&amp;W's original no.</b>	90,10,000016861
	<b>B&amp;W's SAP no.</b>	5000001772
<ul style="list-style-type: none"> <li>• Air-cooled DynaGrate</li> <li>• Water-cooled DynaGrate</li> </ul>	<b>Weight each</b>	1.9 kg
<b>Installation place</b>	<b>Model no.</b>	601.118
		<ul style="list-style-type: none"> <li>• On the shafts.</li> </ul>



### *Swing plate*

<b>Grate type</b>	<b>B&amp;W's original no.</b>	90,10,000019200
	<b>B&amp;W's SAP no.</b>	5000006307
<ul style="list-style-type: none"> <li>• Air-cooled DynaGrate</li> <li>• Water-cooled DynaGrate</li> </ul>	<b>Weight each</b>	15.3 kg
<b>Installation place</b>	<b>Model no.</b>	601.096
		<ul style="list-style-type: none"> <li>• Interior grate sides, by the shafts.</li> </ul>





## Wear parts for DynaGrate®

### Swing plate for Ø110 mm shaft

<b>Grate type</b>	<b>B&amp;W's original no.</b>	90,10,000019202
• Air-cooled DynaGrate	<b>B&amp;W's SAP no.</b>	5000006306
• Water-cooled DynaGrate	<b>Weight each</b>	15.3 kg
<b>Installation place</b>	<b>Model no.</b>	602.734
• Interior grate sides by the shafts.		



### Swing plate for middle section

<b>Grate type</b>	<b>B&amp;W's original no.</b>	90,10,000019208
• Air-cooled DynaGrate	<b>B&amp;W's SAP no.</b>	5000006305
• Water-cooled DynaGrate	<b>Weight each</b>	4.6 kg
<b>Installation place</b>	<b>Model no.</b>	601.432
• Interior grate sides by the shafts.		



### Tension rod, 4a

<b>Grate type</b>	<b>B&amp;W's original no.</b>	90,40,000045014
• Air-cooled DynaGrate	<b>B&amp;W's SAP no.</b>	5000007305
• Water-cooled DynaGrate	<b>Weight each</b>	13.7 kg
<b>Installation place</b>	<b>Model no.</b>	601.226
• Exterior side of the grate. Cylinder brackets are fitted on it.		



### Tension rod, 6a

<b>Grate type</b>	<b>B&amp;W's original no.</b>	90,40,000045024
• Air-cooled DynaGrate	<b>B&amp;W's SAP no.</b>	5000007307
• Water-cooled DynaGrate	<b>Weight each</b>	26.5 kg
<b>Installation place</b>	<b>Model no.</b>	601.226
• Exterior side of the grate. Cylinder brackets are fitted on it.		



### Pin for drive arm with carb bearing L=60 mm, Ø40 mm

<b>Grate type</b>	<b>B&amp;W's original no.</b>	90,70,000074104
• Air-cooled DynaGrate	<b>B&amp;W's SAP no.</b>	5000006610
• Water-cooled DynaGrate	<b>Weight each</b>	0.6 kg
<b>Installation place</b>	<b>Model no.</b>	601.849
• Together with drive arm and tensiod rod.		



## Wear parts for DynaGrate®

### *Pin for synchronous joint with carb bearing L=79 mm, Ø40 mm*

<b>Grate type</b>	<b>B&amp;W's original no.</b>	90,70,000074214
• Air-cooled DynaGrate	<b>B&amp;W's SAP no.</b>	5000006611
• Water-cooled DynaGrate	<b>Weight each</b>	0.7 kg
<b>Installation place</b>	<b>Model no.</b>	601.848
• Together with synchronous arm and synchronous joint.		



### *Pin for cylinder L=109 mm, Ø45 mm*

<b>Grate type</b>	<b>B&amp;W's original no.</b>	90,70,000074222
• Air-cooled DynaGrate	<b>B&amp;W's SAP no.</b>	5000006608
• Water-cooled DynaGrate	<b>Weight each</b>	1.4 kg
<b>Installation place</b>	<b>Model no.</b>	601.808
• Together with the grate cylinder and cylinder bracket.		



### *Stretch bolt M16x110 mm*

<b>Grate type</b>	<b>B&amp;W's original no.</b>	90,80,000080723
• Air-cooled DynaGrate	<b>B&amp;W's SAP no.</b>	5000002731
• Water-cooled DynaGrate	<b>Weight each</b>	0.2 kg
<b>Installation place</b>	<b>Model</b>	601.828
• Used to bolt the grate bars to the shafts.		



### *Carb bearing 40/62x22 mm*

<b>Grate type</b>	<b>B&amp;W's original no.</b>	90,80,000086120
<ul style="list-style-type: none"><li>• Air-cooled DynaGrate</li></ul>	<b>B&amp;W's SAP no.</b>	5000003135
<ul style="list-style-type: none"><li>• Water-cooled DynaGrate</li></ul>	<b>Weight each</b>	0.3 kg
<b>Installation place</b>		
<ul style="list-style-type: none"><li>• In the tension rod.</li></ul>		



### *Disc spring Ø159 mm/111x1.5 mm*

<b>Grate type</b>	<b>B&amp;W's original no.</b>	90,70,000071230
<ul style="list-style-type: none"><li>• Air-cooled DynaGrate</li></ul>	<b>B&amp;W's SAP no.</b>	5000002999
<ul style="list-style-type: none"><li>• Water-cooled DynaGrate</li></ul>	<b>Weight each</b>	0.2 kg
<b>Installation place</b>		
<ul style="list-style-type: none"><li>• At the bottom of the shafts together with the disc spring cover.</li></ul>		



## Wear parts for DynaGrate®

### *Inlet pipe, right*

<b>Grate type</b>	<b>B&amp;W's original no.</b>	90,70,000079610
• Water-cooled DynaGrate	<b>B&amp;W's SAP no.</b>	5000007032
<b>Installation place</b>	<b>Weight each</b>	3.3 kg
• Below the water-cooled grate elements, on the side of the shafts.	<b>Model no.</b>	601.200



### *Inlet pipe, left*

<b>Grate type</b>	<b>B&amp;W's original no.</b>	90,70,000079611
• Water-cooled DynaGrate	<b>B&amp;W's SAP no.</b>	5000007033
<b>Installation place</b>	<b>Weight each</b>	3.3 kg
• Below the water-cooled grate elements, by the side of the shafts.	<b>Model no.</b>	601.229



### *Coupling block*

<b>Grate type</b>	<b>B&amp;W's original no.</b>	90,70,000079660
• Water-cooled DynaGrate	<b>B&amp;W's SAP no.</b>	5000002894
<b>Installation place</b>	<b>Weight each</b>	1.6 kg
• Below and between the water-cooled grate elements.	<b>Model no.</b>	601.239





## Wear parts for DynaGrate®

### Insulation plate III L=4790 mm (furnace width 5200 mm)

#### Available for the following types:

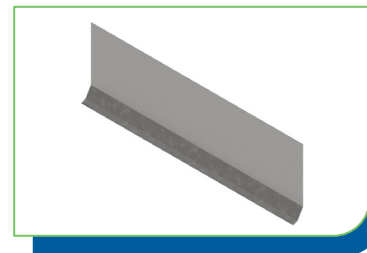
- Furnace width 1600
- Furnace width 1800
- Furnace width 2000
- Furnace width 2200
- Furnace width 2400
- Furnace width 2800
- Furnace width 3200
- Furnace width 3600
- Furnace width 4000
- Furnace width 4200
- Furnace width 4400
- Furnace width 4800

**B&W's original no.** 90,40,000049136

**B&W's SAP no.** 5200017753

**Weight each** 58.5 kg

**Model no.** 601.317



#### Installation place

- Under the grate bed, by all sections.

### Insulation plate IV L=4790 mm (furnace width 5200 mm)

#### Available for the following types:

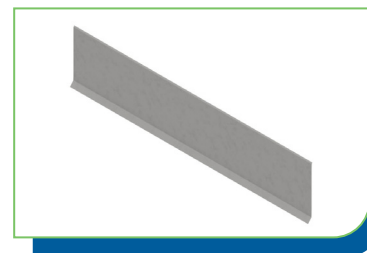
- Furnace width 1600
- Furnace width 1800
- Furnace width 2000
- Furnace width 2200
- Furnace width 2400
- Furnace width 2800
- Furnace width 3200
- Furnace width 3600
- Furnace width 4000
- Furnace width 4200
- Furnace width 4400
- Furnace width 4800

**B&W's original no.** 90,40,000049146

**B&W's SAP no.** 5200017754

**Weight each** 40.0 kg

**Model no.** 601.320



#### Installation place

- Under the grate bed, by all sections.

## Strategic parts for DynaGrate®



### Strategic parts for DynaGrate:

- Typically not stocked items
- Typically long delivery time
- Always order in due time

### *T-plate, under*

<b>Grate type</b>	<b>B&amp;W's original no.</b>	90,10,000016308
<ul style="list-style-type: none"> <li>• Air-cooled DynaGrate</li> <li>• Water-cooled DynaGrate</li> </ul>	<b>B&amp;W's SAP no.</b>	5000006506
	<b>Weight each</b>	8.5 kg
<b>Installation place</b>	<b>Model no.</b>	601.210
<ul style="list-style-type: none"> <li>• Exterior side of the grate, on the fixed bearing brackets.</li> </ul>		



### *T-plate, upper left/lower right, under*

<b>Grate type</b>	<b>B&amp;W's original no.</b>	90,10,000016318
<ul style="list-style-type: none"> <li>• Air-cooled DynaGrate</li> <li>• Water-cooled DynaGrate</li> </ul>	<b>B&amp;W's SAP no.</b>	5000006507
	<b>Weight each</b>	9.0 kg
<b>Installation place</b>	<b>Model no.</b>	601.211
<ul style="list-style-type: none"> <li>• Exterior side of the grate, on the fixed bearing brackets.</li> </ul>		



### *End piece*

<b>Grate type</b>	<b>B&amp;W's original no.</b>	90,10,000016670
<ul style="list-style-type: none"> <li>• Air-cooled DynaGrate</li> <li>• Water-cooled DynaGrate</li> </ul>	<b>B&amp;W's SAP no.</b>	5000000830
	<b>Weight each</b>	5.6 kg
<b>Installation place</b>	<b>Model no.</b>	601.301
<ul style="list-style-type: none"> <li>• In the end section.</li> </ul>		



### *Middle piece*

<b>Grate type</b>	<b>B&amp;W's original no.</b>	90,20,000023230
<ul style="list-style-type: none"> <li>• Air-cooled DynaGrate</li> <li>• Water-cooled DynaGrate</li> </ul>	<b>B&amp;W's SAP no.</b>	5000003278
	<b>Weight each</b>	24.9 kg
<b>Installation place</b>	<b>Model no.</b>	601.110
<ul style="list-style-type: none"> <li>• At the top of the grate sides, up against the cover plates, all the way down.</li> </ul>		



## Strategic parts for DynaGrate®

### Middle piece, top

<b>Grate type</b>	<b>B&amp;W's original no.</b>	90,20,000023231
• Air-cooled DynaGrate	<b>B&amp;W's SAP no.</b>	5000003279
• Water-cooled DynaGrate	<b>Weight each</b>	13.5 kg
<b>Installation place</b>	<b>Model no.</b>	601.119
• At the top of the grate sides, up against the cover plates, at the start section.		



### Shaft cover plate, type T

<b>Grate type</b>	<b>B&amp;W's original no.</b>	90,20,000026301
• Air-cooled DynaGrate	<b>B&amp;W's SAP no.</b>	5000000845
• Water-cooled DynaGrate	<b>Weight each</b>	8.9 kg
<b>Installation place</b>	<b>Model no.</b>	601.128
• Between the swing plates and shafts, all the way down.		



### Shaft cover plate, upper left/lower right

<b>Grate type</b>	<b>B&amp;W's original no.</b>	90,20,000026311
• Air-cooled DynaGrate	<b>B&amp;W's SAP no.</b>	5000000851
• Water-cooled DynaGrate	<b>Weight each</b>	6.0 kg
<b>Installation place</b>	<b>Model no.</b>	601.137
• Start/end section by the swing plate, top-left side and bottom-right side.		



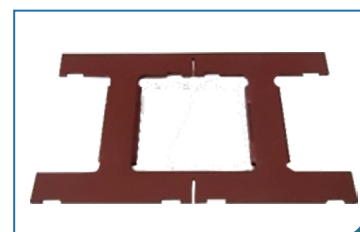
### Shaft cover plate, upper right/lower left

<b>Grate type</b>	<b>B&amp;W's original no.</b>	90,20,000026321
• Air-cooled DynaGrate	<b>B&amp;W's SAP no.</b>	5000000846
• Water-cooled DynaGrate	<b>Weight each</b>	6.0 kg
<b>Installation place</b>	<b>Model no.</b>	601.136
• Start/end section by the swing plate, top-right side and bottom-left side.		



### Frame for cover plates

<b>Grate type</b>	<b>B&amp;W's original no.</b>	90,40,000044012
• Air-cooled DynaGrate	<b>B&amp;W's SAP no.</b>	5200008539
• Water-cooled DynaGrate	<b>Weight each</b>	3.8 kg
<b>Installation place</b>	<b>Model no.</b>	0427017
• End section. Used for the cover plates and terminal blocks.		





## Strategic parts for DynaGrate®

### Upper radiation shield, radius 77 mm

<b>Grate type</b>	<b>B&amp;W's original no.</b>	90,40,000046110
• Air-cooled DynaGrate	<b>B&amp;W's SAP no.</b>	5000006237
• Water-cooled DynaGrate	<b>Weight each</b>	7.5 kg
<b>Installation place</b>	<b>Model no.</b>	601.299
• Exterior side of the grate, by the shafts.		



### Upper radiation shield, radius 82 mm

<b>Grate type</b>	<b>B&amp;W's original no.</b>	90,40,000046111
• Air-cooled DynaGrate	<b>B&amp;W's SAP no.</b>	5000006969
• Water-cooled DynaGrate	<b>Weight each</b>	7.5 kg
<b>Installation place</b>	<b>Model no.</b>	601.237
• Exterior side of the grate, by the shafts.		



### Upper radiation shield for grate W=5600-6000 mm, radius 82/87 mm

<b>Grate type</b>	<b>B&amp;W's original no.</b>	90,40,000046116
• Air-cooled DynaGrate	<b>B&amp;W's SAP no.</b>	5200008142
• Water-cooled DynaGrate	<b>Weight each</b>	7.5 kg
<b>Installation place</b>	<b>Model no.</b>	0411327
• Exterior side of the grate, by the shafts.		



### Lower radiation shield, type T, radius 77 mm

<b>Grate type</b>	<b>B&amp;W's original no.</b>	90,40,000046101
• Air-cooled DynaGrate	<b>B&amp;W's SAP no.</b>	5000006236
• Water-cooled DynaGrate	<b>Weight each</b>	5.3 kg
<b>Installation place</b>	<b>Model no.</b>	601.129
• Exterior side of the grate, by the shafts.		



### Lower radiation shield, radius 82 mm

<b>Grate type</b>	<b>B&amp;W's original no.</b>	90,40,000046103
• Air-cooled DynaGrate	<b>B&amp;W's SAP no.</b>	5000003415
• Water-cooled DynaGrate	<b>Weight each</b>	5.3 kg
<b>Installation place</b>	<b>Model no.</b>	602.735
• Exterior side of the grate, by the shafts.		



## Strategic parts for DynaGrate®

### Lower radiation shield for grate W=5600–6000, radius 87 mm

<b>Grate type</b>	<b>B&amp;W's original no.</b>	90,40,000046016
• Air-cooled DynaGrate	<b>B&amp;W's SAP no.</b>	5200008141
• Water-cooled DynaGrate	<b>Weight each</b>	5.3 kg
<b>Installation place</b>	<b>Model no.</b>	0411308
• Exterior side of the grate, by the shafts.		



### Lower radiation shield, lower left/upper right

<b>Grate type</b>	<b>B&amp;W's original no.</b>	90,40,000046123-1
• Air-cooled DynaGrate	<b>B&amp;W's SAP no.</b>	5000007434
• Water-cooled DynaGrate	<b>Weight each</b>	3.4 kg
<b>Installation place</b>	<b>Model no.</b>	602.736
• Exterior side of the grate, by the first and last sections.		



### Lower radiation shield, upper left/lower right

<b>Grate type</b>	<b>B&amp;W's original no.</b>	90,40,000046123-2
• Air-cooled DynaGrate	<b>B&amp;W's SAP no.</b>	5200010399
• Water-cooled DynaGrate	<b>Weight each</b>	3.4 kg
<b>Installation place</b>	<b>Model no.</b>	602.736
• Exterior side of the grate, by the first and last sections.		



### Upper radiation shield, lower left/upper right

<b>Grate type</b>	<b>B&amp;W's original no.</b>	90,40,000046133-1
• Air-cooled DynaGrate	<b>B&amp;W's SAP no.</b>	5000007437
• Water-cooled DynaGrate	<b>Weight each</b>	4.1 kg
<b>Installation place</b>	<b>Model no.</b>	602.737
• Exterior side of the grate, by the first and last sections.		



### Upper radiation shield, upper left/lower right

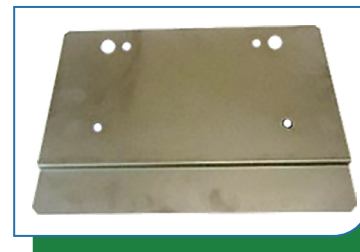
<b>Grate type</b>	<b>B&amp;W's original no.</b>	90,40,000046133-2
• Air-cooled DynaGrate	<b>B&amp;W's SAP no.</b>	5200010400
• Water-cooled DynaGrate	<b>Weight each</b>	4.1 kg
<b>Installation place</b>	<b>Model no.</b>	602.737
• Exterior side of the grate, by the first and last sections.		



## Strategic parts for DynaGrate®

### Radiation shield for middle piece

<b>Grate type</b>	<b>B&amp;W's original no.</b>	90,40,000046140
• Air-cooled DynaGrate	<b>B&amp;W's SAP no.</b>	5000006235
• Water-cooled DynaGrate	<b>Weight each</b>	1.1 kg
<b>Installation place</b>	<b>Model no.</b>	600.998
• Below the middle piece and above the insulation at the top of the grate sides.		



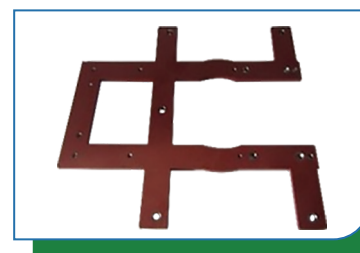
### Support frame, type T

<b>Grate type</b>	<b>B&amp;W's original no.</b>	90,40,000046201
• Air-cooled DynaGrate	<b>B&amp;W's SAP no.</b>	5000001298
• Water-cooled DynaGrate	<b>Weight each</b>	9.3 kg
<b>Installation place</b>	<b>Model no.</b>	601.126
• Around the radiation shield for fitting of the guide pin etc.		



### Frame for bottom T-plate

<b>Grate type</b>	<b>B&amp;W's original no.</b>	90,40,000046202
• Air-cooled DynaGrate	<b>B&amp;W's SAP no.</b>	5000007096
• Water-cooled DynaGrate	<b>Weight each</b>	10.6 kg
<b>Installation place</b>	<b>Model no.</b>	601.141
• Around the radiation shield for fitting of the guide pin etc.		



### Rail for frame

<b>Grate type</b>	<b>B&amp;W's original no.</b>	90,40,000046210
• Air-cooled DynaGrate	<b>B&amp;W's SAP no.</b>	5000005569
• Water-cooled DynaGrate	<b>Weight each</b>	2.3 kg
<b>Installation place</b>	<b>Model no.</b>	600.985
• Around the support frame (top).		



### Bracket, upper, element 1, left, L=398 mm

<b>Grate type</b>	<b>B&amp;W's original no.</b>	90,40,00047111L
• Air-cooled DynaGrate	<b>B&amp;W's SAP no.</b>	5200008129
• Water-cooled DynaGrate	<b>Weight each</b>	8.3 kg
<b>Installation place</b>	<b>Model no.</b>	601.322
• On the lower brackets, at the elements between the grate transitions.		



## Strategic parts for DynaGrate®

### Bracket, upper, element 1, left, L=394 mm

<b>Grate type</b>	<b>B&amp;W's original no.</b>	90,40,000047114
• Air-cooled DynaGrate	<b>B&amp;W's SAP no.</b>	5200007639
• Water-cooled DynaGrate	<b>Weight each</b>	8.3 kg
<b>Installation place</b>	<b>Model no.</b>	0346181
• On the lower brackets, at the elements between the grate transitions.		



### Bracket, upper, element 1, right, L=398 mm

<b>Grate type</b>	<b>B&amp;W's original no.</b>	90,40,00047111R
• Air-cooled DynaGrate	<b>B&amp;W's SAP no.</b>	5200008128
• Water-cooled DynaGrate	<b>Weight each</b>	8.3 kg
<b>Installation place</b>	<b>Model no.</b>	601.322
• On the lower brackets, at the elements between the grate transitions.		



### Bracket, upper, element 1, right, L=394 mm

<b>Grate type</b>	<b>B&amp;W's original no.</b>	90,40,000047115
• Air-cooled DynaGrate	<b>B&amp;W's SAP no.</b>	5200007641
• Water-cooled DynaGrate	<b>Weight each</b>	8.3 kg
<b>Installation place</b>	<b>Model no.</b>	03416181
• On the lower brackets, at the elements between the grate transitions.		



### Bracket, upper, element 2

<b>Grate type</b>	<b>B&amp;W's original no.</b>	90,40,000047112
• Air-cooled DynaGrate	<b>B&amp;W's SAP no.</b>	5000002936
• Water-cooled DynaGrate	<b>Weight each</b>	4.3 kg
<b>Installation place</b>	<b>Model no.</b>	601.323
• On the lower brackets, at the elements between the grate transitions.		



### Bracket, lower, element 2

<b>Grate type</b>	<b>B&amp;W's original no.</b>	90,40,000047122
• Air-cooled DynaGrate	<b>B&amp;W's SAP no.</b>	5000007050
• Water-cooled DynaGrate	<b>Weight each</b>	21.2 kg
<b>Installation place</b>	<b>Model no.</b>	601.327
• On the lower frame, between the section transitions, together with the upper bracket.		



## Strategic parts for DynaGrate®

### Lower bracket element, left

<b>Grate type</b>	<b>B&amp;W's original no.</b>	90,40,00047126L
• Air-cooled DynaGrate	<b>B&amp;W's SAP no.</b>	5200008486
• Water-cooled DynaGrate	<b>Weight each</b>	8.4 kg
<b>Installation place</b>	<b>Model no.</b>	601.246
• On the lower frame, between the section transitions, together with the upper bracket.		



### Lower bracket element, right (as shown)

<b>Grate type</b>	<b>B&amp;W's original no.</b>	90,40,00047126R
• Air-cooled DynaGrate	<b>B&amp;W's SAP no.</b>	5200008487
• Water-cooled DynaGrate	<b>Weight each</b>	8.4 kg
<b>Installation place</b>	<b>Model no.</b>	601.246
• On the lower frame, between the section transitions, together with the upper bracket.		



### Swing fitting for connection plate

<b>Grate type</b>	<b>B&amp;W's original no.</b>	90,40,000049640
• Air-cooled DynaGrate	<b>B&amp;W's SAP no.</b>	5000006304
• Water-cooled DynaGrate	<b>Weight each</b>	5.6 kg
<b>Installation place</b>	<b>Model no.</b>	601.231
• On the barrel bolt, which is located between the pusher table and the first grate. The connection plate is mounted on it.		



### Sealing bush Ø180 mm

<b>Grate type</b>	<b>B&amp;W's original no.</b>	90,20,000022032
• Air-cooled DynaGrate	<b>B&amp;W's SAP no.</b>	5000003545
• Water-cooled DynaGrate	<b>Weight each</b>	2.7 kg
<b>Installation place</b>	<b>Model no.</b>	601.438
• Outside the bearing housing on all shafts.		



### Bearing housing GGG40, Ø110 mm

<b>Grate type</b>	<b>B&amp;W's original no.</b>	90,20,00002102
• Air-cooled DynaGrate	<b>B&amp;W's SAP no.</b>	5000003150
• Water-cooled DynaGrate	<b>Weight each</b>	13.5 kg
<b>Installation place</b>	<b>Model no.</b>	601.235
• On the shafts, on the exterior side of the grate.		





## Strategic parts for DynaGrate®

### Bearing housing EN GJS-400-15, Ø110 mm

<b>Grate type</b>	<b>B&amp;W's original no.</b>	90,20,000022103
• Air-cooled DynaGrate	<b>B&amp;W's SAP no.</b>	5200008078
• Water-cooled DynaGrate	<b>Weight each</b>	13.5 kg
<b>Installation place</b>	<b>Model no.</b>	601.235
• On the shafts, on the exterior side of the grate.		



### Fixed bearing support

<b>Grate type</b>	<b>B&amp;W's original no.</b>	90,20,000022108
• Air-cooled DynaGrate	<b>B&amp;W's SAP no.</b>	5000001920
• Water-cooled DynaGrate	<b>Weight each</b>	32.0 kg
<b>Installation place</b>	<b>Model no.</b>	601.198
• On the inside of the grate sections. The shafts are mounted on it.		



### Driving arm with carb bearing Ø100 mm

<b>Grate type</b>	<b>B&amp;W's original no.</b>	90,20,000024016
• Air-cooled DynaGrate	<b>B&amp;W's SAP no.</b>	5000001717
• Water-cooled DynaGrate	<b>Weight each</b>	20.0 kg
<b>Installation place</b>	<b>Model no.</b>	602.738
• On the shafts together with the synchronous arm and guiding plate.		



### Synchronous arm for carb bearing, H=116 mm

<b>Grate type</b>	<b>B&amp;W's original no.</b>	90,20,000024312
• Air-cooled DynaGrate	<b>B&amp;W's SAP no.</b>	5000006314
• Water-cooled DynaGrate	<b>Weight each</b>	16.0 kg
<b>Installation place</b>	<b>Model no.</b>	601.194-1
• On the shafts together with the driving arm and guiding plate.		



### Synchronous arm for carb bearing H=72 mm

<b>Grate type</b>	<b>B&amp;W's original no.</b>	90,20,000024322
• Air-cooled DynaGrate	<b>B&amp;W's SAP no.</b>	5000006315
• Water-cooled DynaGrate	<b>Weight each</b>	16.0 kg
<b>Installation place</b>	<b>Model no.</b>	601.194-2
• On the shafts together with the driving arm and guiding plate.		



## Strategic parts for DynaGrate®

### Guiding plate with high spring, Ø100 mm

<b>Grate type</b>	<b>B&amp;W's original no.</b>	90,20,000025014
• Air-cooled DynaGrate	<b>B&amp;W's SAP no.</b>	5000003274
• Water-cooled DynaGrate	<b>Weight each</b>	19.0 kg
<b>Installation place</b>	<b>Model no.</b>	601.173
• On the shafts together with the driving arm and synchronous arm.		



### Synchronous joint with carb bearing

<b>Grate type</b>	<b>B&amp;W's original no.</b>	90,20,000024414
• Air-cooled DynaGrate	<b>B&amp;W's SAP no.</b>	5000006319
• Water-cooled DynaGrate	<b>Weight each</b>	3.2 kg
<b>Installation place</b>	<b>Model no.</b>	601.441
• Between the synchronous arms, at the shafts.		



### Right cylinder bracket

<b>Grate type</b>	<b>B&amp;W's original no.</b>	90,20,000025212
• Air-cooled DynaGrate	<b>B&amp;W's SAP no.</b>	5000001654
• Water-cooled DynaGrate	<b>Weight each</b>	7.2 kg
<b>Installation place</b>	<b>Model no.</b>	601.193-1
• On the tension rods.		



### Left cylinder bracket

<b>Grate type</b>	<b>B&amp;W's original no.</b>	90,20,000025222
• Air-cooled DynaGrate	<b>B&amp;W's SAP no.</b>	5000001651
• Water-cooled DynaGrate	<b>Weight each</b>	7.2 kg
<b>Installation place</b>	<b>Model no.</b>	601.193-2
• On the tension rods.		



### Guide pin Ø25mm, L=160 mm

<b>Grate type</b>	<b>B&amp;W's original no.</b>	90,70,000074300
• Air-cooled DynaGrate	<b>B&amp;W's SAP no.</b>	5000006256
• Water-cooled DynaGrate	<b>Weight each</b>	0.4 kg
<b>Installation place</b>	<b>Model no.</b>	600.988
• Fixed in the bearing housing and secured in the support frame.		



## Strategic parts for DynaGrate®

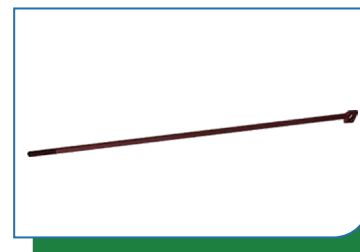
### Guide pin Ø25 mm, L=176 mm

<b>Grate type</b>	<b>B&amp;W's original no.</b>	90,70,000074302
• Air-cooled DynaGrate	<b>B&amp;W's SAP no.</b>	5200007638
• Water-cooled DynaGrate	<b>Weight each</b>	0.4 kg
<b>Installation place</b>	<b>Model no.</b>	0346131
• Fixed in the bearing housing and secured in the support frame.		



### Bolt L=678 mm

<b>Grate type</b>	<b>B&amp;W's original no.</b>	90,70,000074400
• Air-cooled DynaGrate	<b>B&amp;W's SAP no.</b>	5000001251
• Water-cooled DynaGrate	<b>Weight each</b>	0.7 kg
<b>Installation place</b>	<b>Model no.</b>	600.996
• Into the side of the grate sections, through the middle piece. It holds the cover plate in place at the end.		



### Strip for mantle and T-plate

<b>Grate type</b>	<b>B&amp;W's original no.</b>	90,70,000078570
• Air-cooled DynaGrate	<b>B&amp;W's SAP no.</b>	52000010233
• Water-cooled DynaGrate	<b>Weight each</b>	0.7 kg
<b>Installation place</b>	<b>Model no.</b>	0044095
• Between the mantles, in the top.		



### Barrel bolt for T-plate/shaft cover plate

<b>Grate type</b>	<b>B&amp;W's original no.</b>	90,70,000078500
• Air-cooled DynaGrate	<b>B&amp;W's SAP no.</b>	5000005902
• Water-cooled DynaGrate	<b>Weight each</b>	1.0 kg
<b>Installation place</b>	<b>Model no.</b>	600.290
• Inside, behind the T-plate. It holds the T-plate in place.		



### Barrel bolt for upper/lower T-plate

<b>Grate type</b>	<b>B&amp;W's original no.</b>	90,70,000078501
• Air-cooled DynaGrate	<b>B&amp;W's SAP no.</b>	5000005903
• Water-cooled DynaGrate	<b>Weight each</b>	0.2 kg
<b>Installation place</b>	<b>Model no.</b>	600.191
• Inside, behind the upper left/lower right T-plate.		



## Strategic parts for DynaGrate®

### Barrel suspension for connection plate

<b>Grate type</b>	<b>B&amp;W's original no.</b>	90,70,000078530
• Air-cooled DynaGrate	<b>B&amp;W's SAP no.</b>	5000005904
• Water-cooled DynaGrate	<b>Weight each</b>	11.7 kg
<b>Installation place</b>	<b>Model no.</b>	602.701
• Into the end of the pusher table on which the swing fixture and connection plates are located.		



### Barrel bolt for lower T-plate

<b>Grate type</b>	<b>B&amp;W's original no.</b>	90,70,000078540
• Air-cooled DynaGrate	<b>B&amp;W's SAP no.</b>	5000007436
• Water-cooled DynaGrate	<b>Weight each</b>	0.6 kg
<b>Installation place</b>	<b>Model no.</b>	601.813
• Together with the lower T-plate.		



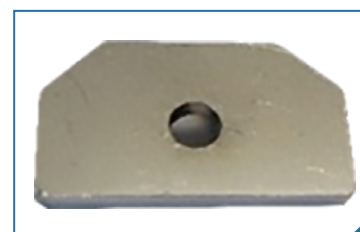
### Lock plate for barrel bolt

<b>Grate type</b>	<b>B&amp;W's original no.</b>	90,70,000078550
• Air-cooled DynaGrate	<b>B&amp;W's SAP no.</b>	5000007435
• Water-cooled DynaGrate	<b>Weight each</b>	0.2 kg
<b>Installation place</b>	<b>Model no.</b>	601.814
• On the barrel bolt and lower T-plate.		



### Lock plate

<b>Grate type</b>	<b>B&amp;W's original no.</b>	90,70,000079310
• Air-cooled DynaGrate	<b>B&amp;W's SAP no.</b>	5000003206
• Water-cooled DynaGrate	<b>Weight each</b>	0.2 kg
<b>Installation place</b>	<b>Model no.</b>	600.126
• On the pin and cylinder bracket.		



### Lock plate at carb bearing

<b>Grate type</b>	<b>B&amp;W's original no.</b>	90,70,000079311
• Air-cooled DynaGrate	<b>B&amp;W's SAP no.</b>	5000003207
• Water-cooled DynaGrate	<b>Weight each</b>	0.2 kg
<b>Installation place</b>	<b>Model no.</b>	601.846
• On the cylinder bracket by the carb bearing.		



## Strategic parts for DynaGrate®

### Round steel bar for end piece

<b>Grate type</b>	<b>B&amp;W's original no.</b>	90,70,000079481
• Air-cooled DynaGrate	<b>B&amp;W's SAP no.</b>	5000004552
• Water-cooled DynaGrate	<b>Weight each</b>	0.1 kg
<b>Installation place</b>	<b>Model no.</b>	600.179
• Holds the cover plate and bolt together.		



### Fitting for barrel bolt for lower T-plate

<b>Grate type</b>	<b>B&amp;W's original no.</b>	90,70,000078560
• Air-cooled DynaGrate	<b>B&amp;W's SAP no.</b>	5000006984
• Water-cooled DynaGrate	<b>Weight each</b>	0.4 kg
<b>Installation place</b>	<b>Model no.</b>	601.862
• On fixed bearing support.		



### Disc spring cover Ø110/Ø165 mm

<b>Grate type</b>	<b>B&amp;W's original no.</b>	90,70,000071340
• Air-cooled DynaGrate	<b>B&amp;W's SAP no.</b>	5000006598
• Water-cooled DynaGrate	<b>Weight each</b>	0.1 kg
<b>Installation place</b>	<b>Model no.</b>	601.842
• At the base of the shafts. It holds the disc spring in place.		



### Sealing bushing

<b>Grate type</b>	<b>B&amp;W's original no.</b>	90,70,000072200
• Air-cooled DynaGrate	<b>B&amp;W's SAP no.</b>	5000003544
• Water-cooled DynaGrate	<b>Weight each</b>	0,1 kg
<b>Installation place</b>	<b>Model no.</b>	600.182
• On the bolt. It fixates the bolt on the grate side.		



### Clamp fitting

<b>Grate type</b>	<b>B&amp;W's original no.</b>	90,70,000079478
• Air-cooled DynaGrate	<b>B&amp;W's SAP no.</b>	5200009003
• Water-cooled DynaGrate	<b>Weight each</b>	0.2 kg
<b>Installation place</b>	<b>Model no.</b>	601.822
• On the back of the lower T-plate.		





## Strategic parts for DynaGrate®

### Spacer for cylinder Ø50x14.5 mm

<b>Grate type</b>	<b>B&amp;W's original no.</b>	90,70,000071520
• Air-cooled DynaGrate	<b>B&amp;W's SAP no.</b>	5000001704
• Water-cooled DynaGrate	<b>Weight each</b>	0.1 kg
<b>Installation place</b>	<b>Model no.</b>	601.829
• On both sides of the cylinder for the tension rod.		



### Spacer for synchronous joint Ø45x8.4 mm

<b>Grate type</b>	<b>B&amp;W's original no.</b>	90,70,000071501
• Air-cooled DynaGrate	<b>B&amp;W's SAP no.</b>	5000001706
• Water-cooled DynaGrate	<b>Weight each</b>	0.1 kg
<b>Installation place</b>	<b>Model no.</b>	601.847
• On the synchronous joint and the synchronous arm.		



### Spacer for synchronous joint Ø34x9 mm

<b>Grate type</b>	<b>B&amp;W's original no.</b>	90,70,000071500
• Air-cooled DynaGrate	<b>B&amp;W's SAP no.</b>	5000001705
• Water-cooled DynaGrate	<b>Weight each</b>	0.1 kg
<b>Installation place</b>	<b>Model no.</b>	601.811
• On the synchronous joint and the synchronous arm.		



### Spacer

<b>Grate type</b>	<b>B&amp;W's original no.</b>	90,70,000072258
• Air-cooled DynaGrate	<b>B&amp;W's SAP no.</b>	5200010232
• Water-cooled DynaGrate	<b>Weight each</b>	0.1 kg
<b>Installation place</b>	<b>Model no.</b>	601.850
• On the lower T-plate.		



### T-plate, first, middle section

<b>Grate type</b>	<b>B&amp;W's original no.</b>	90,10,000016118
• Water-cooled DynaGrate	<b>B&amp;W's SAP no.</b>	5000006502
<b>Installation place</b>	<b>Weight each</b>	47.8 kg
• On the inside of the grate sections.	<b>Model no.</b>	602.755



## Strategic parts for DynaGrate®

### *T-plate, last, middle section*

<b>Grate type</b>	<b>B&amp;W's original no.</b>	90,10,000016128
• Water-cooled DynaGrate	<b>B&amp;W's SAP no.</b>	5000006505
<b>Installation place</b>	<b>Weight each</b>	26.8 kg
• On the inside of the grate sections.	<b>Model no.</b>	602.756



### *T-plate, middle section*

<b>Grate type</b>	<b>B&amp;W's original no.</b>	90,10,000016238
• Water-cooled DynaGrate	<b>B&amp;W's SAP no.</b>	5000006503
<b>Installation place</b>	<b>Weight each</b>	56.0 kg
• On the inside of the grate sections.	<b>Model no.</b>	602.744



### *First T-plate, middle section*

<b>Grate type</b>	<b>B&amp;W's original no.</b>	90,10,000016117
• Air-cooled DynaGrate	<b>B&amp;W's SAP no.</b>	5200011374
<b>Installation place</b>	<b>Weight each</b>	43.0 kg
• On the inside of the grate sections.	<b>Model no.</b>	0670220



### *Last T-plate, middle section*

<b>Grate type</b>	<b>B&amp;W's original no.</b>	90,10,000016127
• Air-cooled DynaGrate	<b>B&amp;W's SAP no.</b>	5200012711
<b>Installation place</b>	<b>Weight each</b>	78.2 kg
• On the inside of the grate sections.	<b>Model no.</b>	0741006



### *T-plate, middle section*

<b>Grate type</b>	<b>B&amp;W's original no.</b>	90,10,000016237
• Air-cooled DynaGrate	<b>B&amp;W's SAP no.</b>	5200011375
<b>Installation place</b>	<b>Weight each</b>	52.0 kg
• On the inside of the grate sections.	<b>Model no.</b>	0670239



## Strategic parts for DynaGrate®

### *Mantle, middle section*

<b>Grate type</b>	<b>B&amp;W's original no.</b>	90,10,000016508
• Water-cooled DynaGrate	<b>B&amp;W's SAP no.</b>	5000002777
<b>Installation place</b>	<b>Weight each</b>	104.0 kg
• On the inside of the grate sections.	<b>Model no.</b>	690.066



### *Last mantle, middle section*

<b>Grate type</b>	<b>B&amp;W's original no.</b>	90,10,000016527
• Air-cooled DynaGrate	<b>B&amp;W's SAP no.</b>	5200012712
<b>Installation place</b>	<b>Weight each</b>	142.3 kg
• On the inside of the grate sections.	<b>Model no.</b>	0741221



### *First mantle, middle section*

<b>Grate type</b>	<b>B&amp;W's original no.</b>	90,10,000016518
• Water-cooled DynaGrate	<b>B&amp;W's SAP no.</b>	5000002775
<b>Installation place</b>	<b>Weight each</b>	77.0 kg
• On the inside of the grate sections.	<b>Model no.</b>	690.070



### *Last mantle, middle section*

<b>Grate type</b>	<b>B&amp;W's original no.</b>	90,10,000016528
• Water-cooled DynaGrate	<b>B&amp;W's SAP no.</b>	5000002776
<b>Installation place</b>	<b>Weight each</b>	65.5 kg
• On the inside of the grate sections.	<b>Model no.</b>	690.073



### *Mantle, middle section*

<b>Grate type</b>	<b>B&amp;W's original no.</b>	90,10,000016507
• Air-cooled DynaGrate	<b>B&amp;W's SAP no.</b>	5200011372
<b>Installation place</b>	<b>Weight each</b>	97.0 kg
• On the inside of the grate sections.	<b>Model no.</b>	0661246



## Strategic parts for DynaGrate®

### First mantle, middle section

<b>Grate type</b>	<b>B&amp;W's original no.</b>	90,10,000016517
• Air-cooled DynaGrate	<b>B&amp;W's SAP no.</b>	5200011373
<b>Installation place</b>	<b>Weight each</b>	78.6 kg
• On the inside of the grate sections.	<b>Model no.</b>	0670248



### Bearing cover

<b>Grate type</b>	<b>B&amp;W's original no.</b>	90,20,000022048
• Air-cooled DynaGrate	<b>B&amp;W's SAP no.</b>	5200007465
• Water-cooled DynaGrate	<b>Weight each</b>	3.0 kg
<b>Installation place</b>	<b>Model no.</b>	601.228
• On the end of the shaft extension holding the bearing in place.		



### Bearing flange

<b>Grate type</b>	<b>B&amp;W's original no.</b>	90,20,000022008
• Air-cooled DynaGrate	<b>B&amp;W's SAP no.</b>	5200007466
<b>Installation place</b>	<b>Weight each</b>	0.8 kg
• On the end of the shaft extension.	<b>Model no.</b>	601.800



### Sealing flange Ø110 mm

<b>Grate type</b>	<b>B&amp;W's original no.</b>	90,20,000022024
• Air-cooled DynaGrate	<b>B&amp;W's SAP no.</b>	5200007464
• Water-cooled DynaGrate	<b>Weight each</b>	5.4 kg
<b>Installation place</b>	<b>Model no.</b>	601.234
• On the bearing housing.		

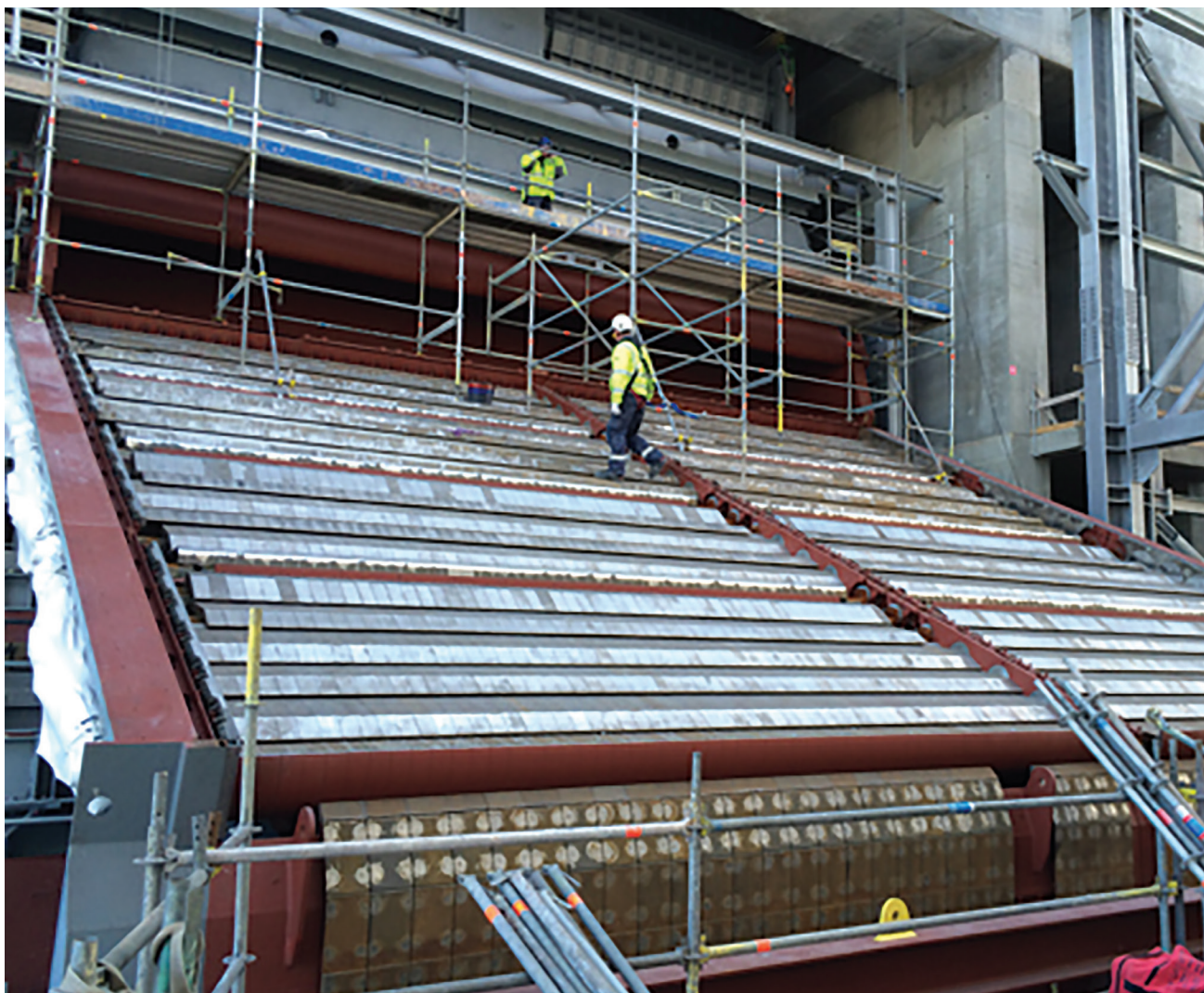


### Guide bearing housing

<b>Grate type</b>	<b>B&amp;W's original no.</b>	90,20,000022201
• Air-cooled DynaGrate	<b>B&amp;W's SAP no.</b>	5000006244
• Water-cooled DynaGrate	<b>Weight each</b>	10.2 kg
<b>Installation place</b>	<b>Model no.</b>	602.733
• On the shafts.		







### **Babcock & Wilcox**

Dybendalsvaenget 3  
2630 Taastrup  
Denmark  
Phone: +45 76.14.34.00

[www.babcock.com/renewable](http://www.babcock.com/renewable)



The information contained herein is provided for general information purposes only and is not intended nor to be construed as a warranty, an offer, or any representation of contractual or other legal responsibility.

*DynaGrate* and *Vølund* are trademarks of The Babcock & Wilcox Company or its affiliates.



Established in 1867, Babcock & Wilcox is a global leader in renewable, environmental and thermal technologies and services for power and industrial applications.

For more information or to contact us, visit our website at [www.babcock.com](http://www.babcock.com).