



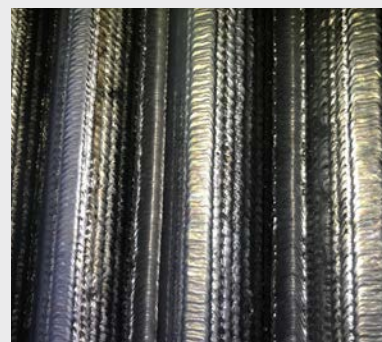
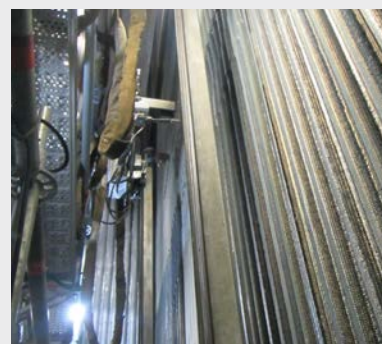
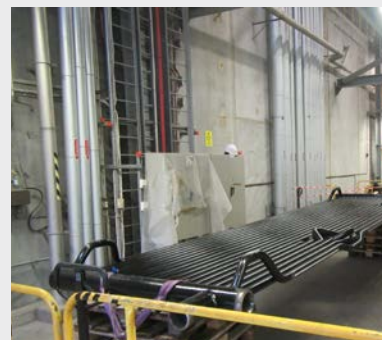
Project description

In 2021, Babcock & Wilcox Renewable Service (B&W Renewable) won the project for onsite Inconel® cladding and combustion air upgrade at Korstaverket in Sundsvall, Sweden.

The client also requested the possibility to increase the capacity of the boiler.

B&W Renewable performed a computational fluid dynamics (CFD) model and recalculated all boiler parameters and concluded that an increase in capacity would require the following:

1. Four new baffle walls added in the third pass to expand the heating surface. This ensures that the flue gas temperature is the same as or lower than the existing boiler.
2. The refractory in the first and second passes should be completely or partially replaced with Inconel cladding so that the heat absorption increases.
3. Installation of water cleaning in the second pass has a positive effect on the flue gas temperature before the superheaters, which also improves their service life. In addition, the risk of heavy fouling of the superheaters will be reduced. For optimal cleaning of the second pass, four cleaning openings are required across the pass.
4. The dimensioning values for the steam were exceeded. B&W Renewable identified that there was a risk water would be drawn from the steam drum. It was recommended that a systematic test run be performed when the water entrainment from the steam drum is measured at higher steam velocities. An alternative was to rebuild the steam drum.



Client: Sundsvall Energi AB
Year: 2021

Milestones

Contract: 2021-05-19
Hand over: 2021-12-31

Data

Fuel: Waste
Steam temperature: 400 °C
Steam pressure: 45 bar(g)

continued ►

Scope of supply

- CFD modelling
- Air system upgrade
- Grate overhaul
- Inconel in 1st pass, approx. 260 m² unfolded area
- Inconel in 2nd pass, approx. 50 m² unfolded area
- Modification of 3rd pass by:
 - 4 new baffle walls – 7 in total
 - New supply pipes and riser pipes

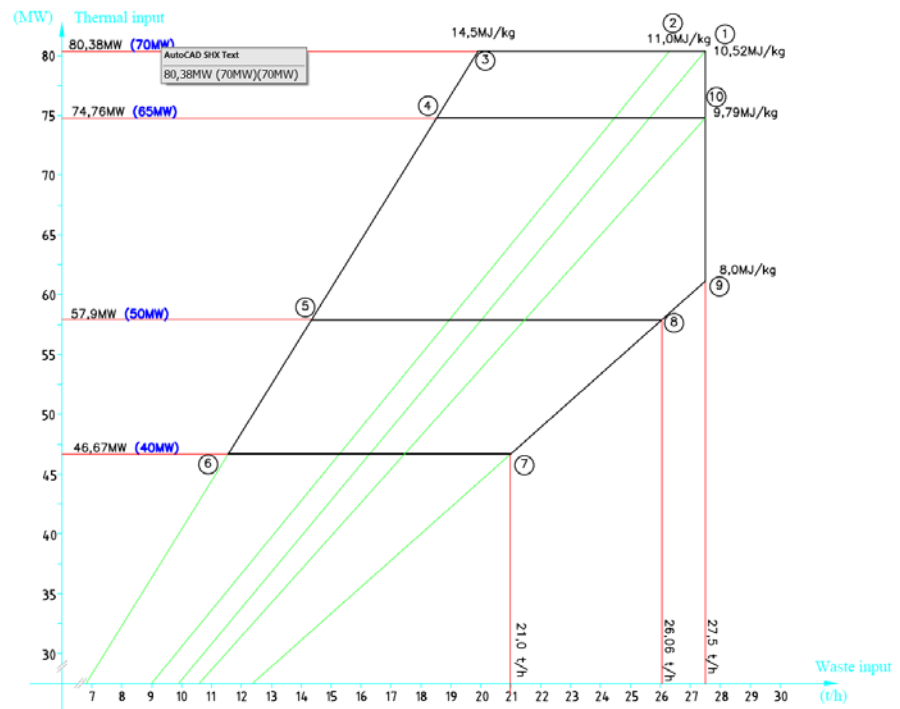


- Modification of overfire air (OFA) and front ceiling nozzles
- Online water cleaning system in 1st and 2nd passes
- New safety valves and silencers
- New feedwater pump motor including frequency converters
- Water injection valve
- 3 new flow meters
- Commissioning



The capacity diagram shows the total load area for Boiler F5. Item 1 corresponds to nominal load.

Boiler output based on 11 MJ/kg (H_v) and flue gas outlet temperature 180 °C.



Babcock & Wilcox

Dybendalsvaenget 3
2630 Taastrup
Denmark
Phone: +45 76.14.34.00

www.babcock.com/renewable



The information contained herein is provided for general information purposes only and is not intended nor to be construed as a warranty, an offer, or any representation of contractual or other legal responsibility.

Inconel is a trademark of Special Metals Corporation and its subsidiaries.



RENEWABLE | ENVIRONMENTAL | THERMAL

Established in 1867, B&W is a global leader in renewable, environmental and thermal technologies and services for power and industrial applications.

For more information or to contact us, visit our website at www.babcock.com.